

01.



COMPANY PROFILE

B. S. ENGINEERING SERVICES

2184, Urban Estate,
Sector-46,
Gurgaon (Haryana)
India. 122002.



project@bsenggservices.com



0124 - 4119975



bsenggservices.com/

ABOUT US



BS ENGINEERING SERVICES is a company, where everything we plan and do begins with the voice of the client, both internal and external results in client delight. A company that lives, breathes and exudes quality from the time we respond to an enquiry till the time we complete the projects and continue a quality relationship, with the client, so that a repeat order becomes the most natural outcome.

BS is a company with a motivated and empowered team of people, networking together, always keeping the client in mind and where each member adds considerable value, minimizing rework and supervision. A company, where the suppliers and sub-contractors are also the partners in progress generating a mutual and strong relationship at the interest of each other's' well-being.

BS a team of motivated engineers and competent manpower capable of handling construction and interiors of commercial, residential & industrial buildings, renovations and maintenance of old building, water proofing & landscaping to various turnkey projects is a company, where the basic framework is based on values and held sacrosanct over growth and profits.

ONE POINT SOLUTION FOR

- Data Center
- Fire & Security Services
- Security System Integrators
- Building Maintenance & Operations
- Sound Proofing & Acoustics Services
- Office Furniture, Wardrobes & Kitchen
- Complete interior fit outs with MEP & HVAC Works

We use superior quality materials for our various services that we offer. From construction and interiors of commercial, residential & industrial buildings, renovations and maintenance of older buildings, water proofing job and landscaping to various turnkey projects, each of them are provided using best made materials procured from reputed manufacturers and dealers across the globe.

MATERIAL USED




Based on certain parameters like quality, purity, consistency, etc., each of the product is individually checked before entering our factory premises. Verified with the assistance of quality experts and on-field managers, we assure our cus-



QUALITY & SAFETY POLICY

We at BS are committed for total client satisfaction through high quality standards/ perfection in our jobs through constant sincere efforts and innovative excellence. We shall commit what we can do and do what we have committed. These objectives are achieved through dedicated team work of each member of BS family. Safe methods are synonymous with efficient methods” is the motto of the company. All contracts shall be undertaken in such a manner so as to ensure that it causes no injury, damage or loss of property to personnel and public at large. The company shall abide by & comply with the law of the land in matters of safety.

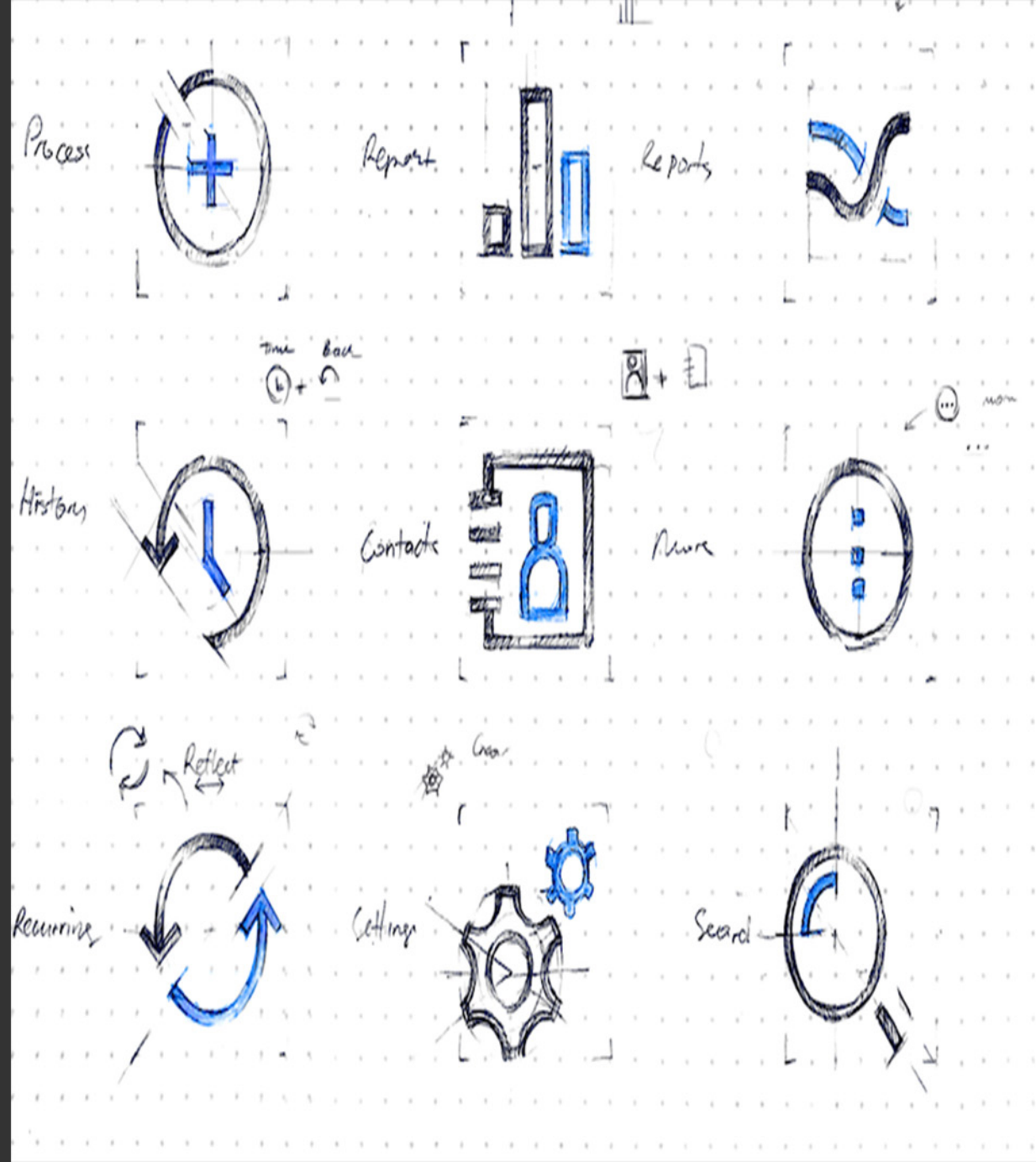


INFRA STRUCTURAL UNIT

Every time we serve our customers, we endeavor to provide them with new and innovative designs. To offer improved technology and unmatched architecture, we have a well-established in-house production department that is facilitated with modern machines and tools. For every service offered, we have different department and project managers working for them.

Each of the department like: wood work, stone work, water proofing job, paint work, carpentry, designing and many more, are outfitted with modernistic tools handled by professionals and experts in their respective fields.

04.



PROFICIENT WORKFORCE



To manage each of the above mentioned departments, we are backed by an adept team that acknowledge trained qualification with vast on-field experience. Our team comprises of proficient managers, trained experts, technical engineers, professional architects, interior decorators and dedicated skilled and unskilled workers.

Working in close co-ordination with each other, they create wonders and come out with best outcomes and solutions. In addition to this, their personal attachment towards their job and hard work empower us to complete every project on time with quality work.

RESEARCH & DEVELOPMENT

With our adept product development department and continual market research, we have developed a better understanding of latest trends and taste of the market. Having a complete knowledge of the dynamic demands of the market and preferences of the customers, we are able to serve our customers well, meeting their specific requirements and offering them what they desire for.

The complete research helps the company in the development of the products and services it offers and endows it to meet & exceed the expectations of the customers' on-time or before time.





BANKING



HEALTH CARE

07.



medanta THE MEDICITY



Embassy of the Kingdom of the Netherlands



Australian Embassy

CORPORATE



OUR CLIENTELE

DATA CENTER



BUILDERS



A FEW OF OUR COMPLETED PRESTIGIOUS PROJECTS

Bharti Airtel Ltd (Wipro Ltd.) - Muzzaffarpur | Nagpur | Bhopal | Bhutan
NXTRA Data Centre, Gurgaon
CICP Delhi & Pune
BSNL DC - Jaipur
Samsung India - (Noida) UP
Mediatech - (Noida) UP
Hildalco - M.P.
NIC - Delhi- Lodhi Road
Honda Cars - Civil & Interiors- G Noida
Idea MSC - Civil , Interiors & Structure
Religare Technova India Pvt. Ltd - Greater Noida
Perfetti Vanmalle India Pvt. Ltd. - IMT Manesar, GGN
Forest Res. Institute - Dehradun, UK.
Inderprastha Apollo Hospital - Sarita Vihar, N. Delhi
Gujarat Gas Co. Ltd. - Ahmadabad, Gujarat.
BPCL - Greater Noida, UP
HHML - Dharuherha (Raj.)
Orissa Computer App. Center - Bhubaneswar, Orissa.
Meghalaya State Data Center - Silong, Meghalaya
Raj. State Data Center - Jaipur, Raj. - 5000 Sq. Ft.
IBM Daksh (186-Infinity) - Gurgaon
Bank of Russia (Canaught Place) - New Delhi
Ministry of Home Affairs (New Delhi)

MAJOR PROJECT

Major Civil HVAC Electrical & Interiors Projects

1. **Idea Cellular, Bhutan Data Center -**
Electrical, HVAC, Civil and interiors fit outs including furniture 50000 Sq Ft
2. **Meghalaya Govt- Data Center -**
Electrical, HVAC, Civil and interiors fit outs including furniture 67000 sq ft area with DG lower side.
3. **UP State Data Center (Lucknow) -**
Electrical, HVAC, Civil and Interiors fit outs including furniture 82000 sq ft area with DG lower side.
4. **Orissa State OCAC Data Center (Bhuvneshwar) -**
Electrical, HVAC, Civil and Interiors fit outs of 65000 sq ft area with DG lower side.
5. **Haryana State Data Center (Lucknow) -**
Electrical, HVAC, Civil and Interiors fit outs of 82000 sq ft area with DG lower side.
6. **Rajasthan State Data Center & Admin block(Jaipur) -**
Electrical, HVAC, Civil and Interiors fit outs including furniture 125000 sq ft area with DG lower side.
7. **Delhi International Airport -**
Electrical, HVAC, Civil and Interiors fit outs at T2 60000 sq ft area.

8. **ABN Amro Bank, Noida -**
Electrical work include Fire, CCTV, GBD, PA System, MC
9. **AMERICAN EXPRESS TRS (Udhyog Vihar, Enkay Center, GURGAON): -**
Regular Contractor for the Building Maintenance/Electrical wiring/ Modular Furniture/ Renovation/ Paint and housekeeping supplies since Apr 2000.
10. **SAHARA INDIA COMMERCIAL CORPORATION LTD (Sahara Mall GGN) :-**
Repair & Maintenance of complete HVAC/HT Panels, UPS & FCUs and painting job.
11. **JMD BUILDING SERVICES PVT. LTD. (GGN.)**
Repair & maintenance of complete building including painting work with material 55,000 Sqft
12. **MGF DEVELOPMENT LTD. (The Plaza) Fabrication work**
Complete fabrication work with material including Foot Over bridge, Stairs, Grating, Man hole, Cab and platform 250 Ton
13. **HUGHES BPO SERVICES (Udhyog Vihar, Gurgaon)**
Regular Contractor for the Building Maintenance/ Electrical wiring/ Modular Furniture/ Renovation/ Paint/Carpentry and housekeeping - supplies since 2005
14. **Honda Cars Greater Noida(UP) -**
Civil & Interiors 2350 Sqft
15. **BPCL Greater Noida, UP -**
Civil & interior, electrical, Fire Fighting 20000 Sqft
16. **Bharti Airtel Ltd (Wipro Ltd.) –**
Muzzaffarpur & Nagpur 112000 Sqft.
17. **NXTRA Data Centre, Gurgaon –**
Civil interior, electrical, Fire Fighting, Camera & DG Low side 1,50,000 sqft
18. **Bharti Airtel, Vijayawada –**
Civil interior, electrical, Fire Fighting, Camera & DG – 32000 Sqft

MAJOR PROJECT

19. Samsung India (Noida) -
Civil interior, electrical, Fire Fighting – 45000 Sqft
20. Mediatech, (Noida) –
Civil, Electricals & Interior fit outs 36000 Sqft
21. Bharti Airtel Ltd Bhopal -
Civil, Electricals & Interior fit outs 9500 Sqft.
22. Religare Technova India Pvt. Ltd, Greater Noida -
Civil, Electricals & Interior fit outs 60000 Sqft.
23. Perfetti Vanmalle India Pvt. Ltd. IMT Manesar -
Civil, Electricals & Interior fit outs 15000 Sqft.
24. Dr. Lal Path Labs Pvt. Ltd. Rohini, New Delhi -
Civil, Electricals & Interior fit outs 9000 Sq. Ft
25. SMC India Pvt. Ltd. Karol Bagh, New Delhi -
Civil, Electricals & Interior fit outs 7500 Sqft
26. Hotel Cambey Grand Ahmadabad, Gujarat -
Civil, Electricals & Interior fit outs 18000 Sqft.
27. Forest Res. Institute Dehradun, (UK) -
Civil, Electricals & Interior fit outs 20000 Sqft.
28. Inderprastha Apollo Hospital Sarita Vihar, N. Delhi -
Civil, Electricals & Interior fit outs 12500 Sqft.
29. Bank of Russia (Canaught Place) New Delhi -
Civil, Electricals & Interior fit outs 13200 Sqft.
30. Hildalco Data Center (Orissa) -
Civil interior, electrical, Fire Fighting & DG - 25000 Sqft.
31. NIC Office Area & Command Center - Lodhi Road, New Delhi
Civil interior, furniture, electrical, Fire Fighting
32. UP District Cooperative Bank
At Bareilly/Sajahanpur / Muradabad/Bijnour /Meerut ,
Saharanpur / Gorakhpur/Chaundali/Amroha, Azamgarh /
Bulandshahr - 225000 Sqft
33. RSWM Bhilwara , Noida (Uttar Pradesh) -
Civil and interiors with furniture 8100 Sqft.
34. Punjab Treasury (Chandigarh) -
Electrical, Civil, Interiors and Furniture 22800 Sqft.
35. Info Edge (Naukri.com) Noida (Uttarpradesh) -
Civil, Electrical, Interiors including furniture & fixtures
45000 Sqft.
36. Ministry of Home Affairs Data Center (New Delhi) -
Electrical, HVAC, DG Lower side, Civil and Interiors fit outs
and furniture 24500 sqft
37. C Dot (Wipro Ltd.) (New Delhi)
Electrical, HVAC, DG Lower side, Civil and Interiors fit outs
and furniture 150000 Sqft
38. United India Insurance Co. Ltd. (Udhyog Vihar) -
Building Maintenance/ Electrical wiring/ Modular Furniture /
Renovation/ Paint/Carpentry and housekeeping supplies
39. IBM Daksh, Cyber Green DLF Cyber City, Gurgaon -
Regular Contractor for the Building Maintenance/Electrical
wiring/ Modular Furniture/ Renovation/ Paint/Carpentry and
housekeeping supplies since 2002
40. IBM Daksh, Infinity Towers, DLF Cyber City, Gurgaon -
Regular Contractor for the Building Maintenance/Electrical
wiring/ Modular Furniture/ Renovation/ Paint/Carpentry and
housekeeping supplies since 2002

MAJOR PROJECTS

MAJOR PROJECTS - HEAVY ELECTRICALS

- Hewlett Packard India Sales Pvt. Ltd.(Ware House)**
Plot No. 09-11A, Sec – 5, Udham Singh Nagar, Rudrapur, Uttaranchal.
SITC of 250KV Genset, Electricals and Awning work – 55000 Sq Ft
- CLASSIC GOLF RESORT: -**
SITC of 750 KVA (Detroit Diesel), 125, 62.5,40 KVA (Kirlosker) HT/LT Electrical system, borewells, lighting etc (450 acres).
- ENKAY TOWER (GGN) : -**
SITC of 800 KVA (2Nos.) and 600KVA (2Nos.) D.G. Sets of Detroit Diesel with Jupiter No-Break System.
- VIDEOCON TOWER: -**
SITC of 800 KVA (2Nos) D.G. sets of Detroit Diesel with Jupiter No-Break System.
- TERRYSOFT TEXTILES LTD (DELHI): -**
SITC & 05 Yr maintenance of 380 KVA (04Nos.) D.G. Sets Kirlosker Cummins and development of 02 lacs sq. ft area

- A.S. & T. (I) LTD. (BILASPUR): -**
SITC & operation and maintenance contract of machines and 500KVA (2Nos.) D.G. sets
- PAL COMMERCIAL COMPLEX (SIKANDERPUR, GURGAON:-**
Complete renovations of commercial complex including removing of existing electrical wiring, control panels & D.B.'s, Risers and control - 43,000 sqft
- PAL TOWER (SIKANDERPUR): -**
Electrical work including H.T. / L.T., lighting, SITC of 162.5 & 82.5 KVA D.G. Set and erection of exhaust line, hydrant and fire lines (50,000 sq. ft.).
- SAHARA INDIA COMMERCIAL CORPORATION LTD –**
Tostoy House CP Delhi/Sahara Nursery, Gurgaon/ Sahara Mall Gurgaon. Completed all electrical work including SITC of 500KVA/250KVA Gensets
- WNS Global Service (Millennium Plaza)**
SITC of UPS (200+200+50 Kva) Supply & Erection of Energy Meter 500 Kwh (with CT, Panel, MCCB, and Cable)
- Inter Globe Enterprises Limited (Global Business Park)**
Supply & Erection of Energy Meter 100 Kwh (with CT, Panel, MCCB, and Cable)

- Vatika Space Management Ltd. (First India Place)**
Supply & Erection of Energy Meter 200 Kwh (with CT, Panel, MCCB, and Cable)
- Cybiz Call International Pvt. Ltd. (Ggn.)**
SITC of 500 Kva Servo Stabilizer, installation of energy meter, earthing and fabrication of structure for DG lower side.
- Paras Down Town Centre**
Supply and Erection of 2 No. FCU Including MS Pipe line, Ducting, Insulation,

MAJOR ON-GOING PROJECTS

1 UNMS Projects:

A) Civil & Interior Works at Jaipur, Pune, Udhampur, Delhi (Palam & Patel Nagar) at Army campus

B) DG Low Side & Fabrication Works at Jaipur, Chandigarh, Udhampur, Delhi (Palam & Patel Nagar) at Army campus

- Jindal Strips Ltd-Hisar –
SITC of complete fire fighting system at new factory premises, NH09, Hisar By Pass, Hisar
- Rawalwasia Inspat Udyog – Hisar –
Repair & replacement of complete fire Hydrant lines (Under ground and over head) at Vill-Satroad, Distt Hisar
- Samsung India –
SITC of complete fire fighting system at Noida campus–



SITE IMAGES

Netherlands Embassy



11.



SITE IMAGES

IBM Noida A-26 Cafeteria



12.



SITE IMAGES

NIC Delhi through Wipro Ltd



एन आई सी
National
Informatics
Centre





SITE IMAGES

Concentrix Cyber City, bld-14



14.

SITE IMAGES

IBM Thinkdesk project



Madanta Hospital Lucknow



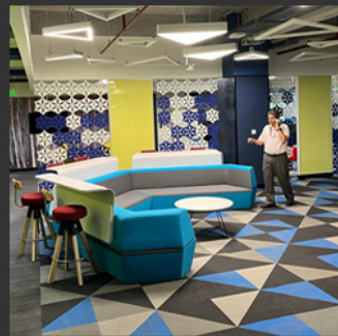
16.
SITE IMAGES



17.



18.



INDIAN ARMY UNMS

MULTIPLE
LOCATIONS



SITE IMAGES

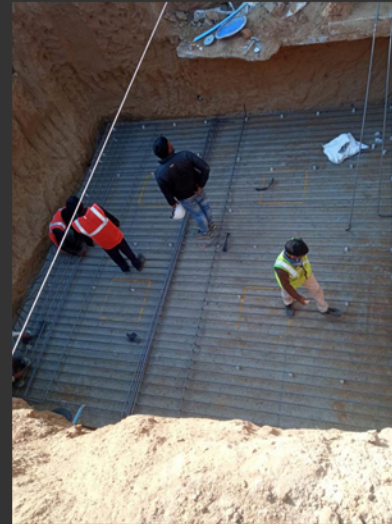
SITE IMAGES





SITE IMAGES

21.





KYNDRYL NOIDA

SITE IMAGES



22.



SITE IMAGES



23.

HSBC NOIDA

HSBC





Reliance
Industries Limited

RELIANCE METL





THANK YOU

2184, Urban Estate,
Sector-46,
Gurgaon (Haryana)
India. 122002.



project@bsenggservices.com



0124 - 4119975



bsenggservices.com/